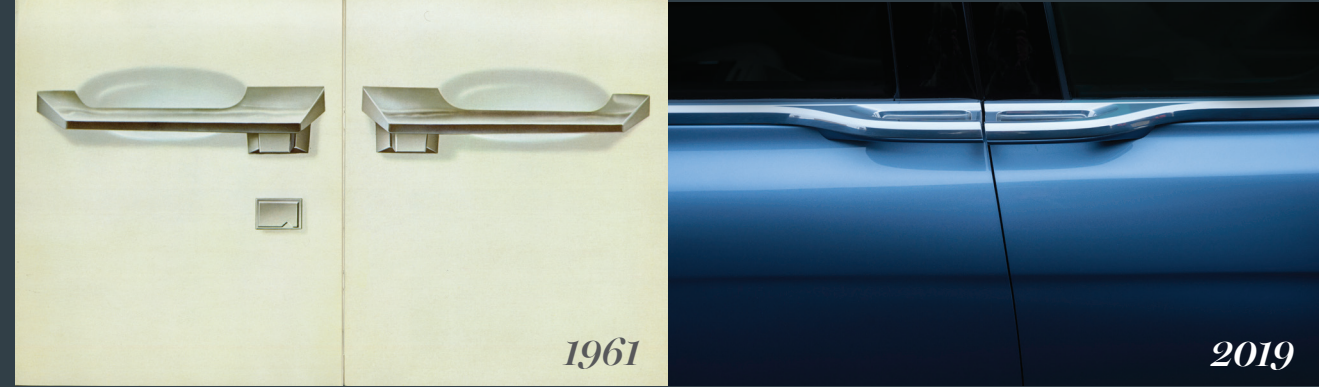



LINCOLN

80TH ANNIVERSARY OF THE LINCOLN CONTINENTAL

“Notice the doors,” the vintage advertisement for the Lincoln Continental began. “And notice how they open. From the center, to make everyone’s entrances graceful.” With that, an enduring automotive design legend was born – the coach doors – or center-opening doors, which conveyed elegance and a touch of Hollywood glamour.



The Lincoln Continental was a custom luxury vehicle hand-crafted by chief stylist Eugene T. Gregorie for Edsel Ford in 1939. This exclusive project served as the genesis for what has become one of the world’s most luxurious automotive icons.

Today, six decades later, Lincoln is bringing back a modern version of these iconic center-opening doors with the introduction of the Lincoln Continental 80th Anniversary Coach Door Edition.

LINCOLN CONTINENTAL IN POP CULTURE

MOVIES

Goldfinger (1964):
1964 Lincoln Continental

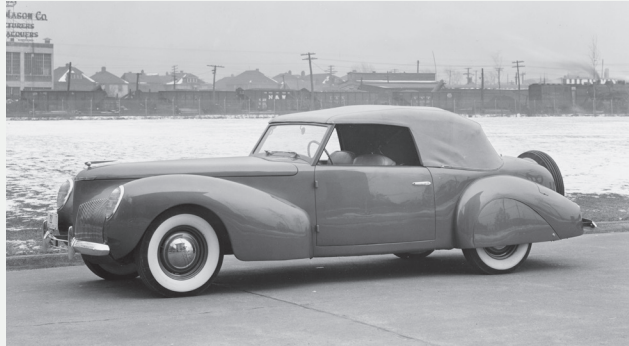
Animal House (1978):
1964 Lincoln Continental

The Matrix (1999):
1965 Lincoln Continental

Hit and Run (2012):
1967 Lincoln Continental

TELEVISION

Entourage (2004-2011):
1965 Lincoln Continental



1939 LINCOLN ZEPHYR SPECIAL

Oct. 6, 1939: 1940 Lincoln Continental Cabriolet, the top of the Lincoln Zephyr line, is introduced to the public at Ford’s guest and display center in Dearborn, Michigan, the Rotunda. The first of these cars is presented by Edsel Ford to Mickey Rooney, who plays the part of “Young Tom Edison,” which is being filmed at Greenfield Village. A total of 404 vehicles are produced.

1939

1941

Sept. 20, 1940: 1941 Lincoln Continental becomes its own car line. Eugene T. Gregorie, head of styling and design, places a new hood ornament on the car, one he refers to as a “speared golf ball.”



LINCOLN CONTINENTAL CABRIOLET PACE CAR
FOR 1946 INDIANAPOLIS 500

MARK I

Celebrated architect Frank Lloyd Wright drives a Lincoln Continental; he describes it as “the most beautiful car in the world.”

On May 30, 1946, Lincoln Continental Cabriolet serves as the pace car of the Indianapolis 500, with Henry Ford II at the wheel.

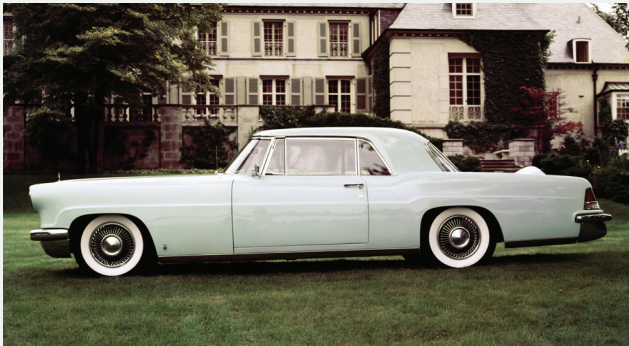
In 1959, Time Magazine publishes a list of the “100 Best Designed Commercial Products of Modern Times,” ranking Lincoln Continental Mark I at No. 6.

1948: This is the last model year of production for the Lincoln Continental Mark I.

1948

1954

1954-1956: While this model is a Continental, it is not a Lincoln. The company forms the Continental division in 1954, then shuts it down in 1957, so the Mark II is a product of the Continental division, not Lincoln.



1956 LINCOLN CONTINENTAL MARK II

Oct. 6, 1955: 1956 Continental Mark II is introduced to the public at the Paris Auto Show to rapturous reviews. It is a splendid car, but at \$9,695, the Continental Mark II is too expensive and exclusive for the market to support.

1955

1955

1955-1957: 1956 Continental Mark II sees production from October 1955 to May 1957 as 1956 and 1957 models.

Oct. 3, 1960: The iconic 1961 Lincoln Continental is introduced.

1960

June 22, 1961: Industrial Design Institute awards 1961 Continental a bronze medal.

1961

MARK II

Only 3,000 Continental Mark IIs are built from 1955 to 1957. Some of the famous owners included Nelson Rockefeller, Barry Goldwater, Frank Sinatra, Cecil B. DeMille, R.J. Reynolds, Bill Harrah, Elvis Presley and the Shah of Iran.

1955

1960

1961



1965 LINCOLN CONTINENTAL MARK II

CONTINENTAL

Continuing Lincoln’s tradition of restrained elegance, the 1961 Continental introduces unique center-opening doors and a chrome-accented upper shoulder line that establishes a signature look for Lincoln. The 1961 Continental remains one of the most enduring designs of all time.

The chiseled profile is the work of seven designers, including Eugene Bordinat, Don DeLaRossa, Elwood Engle, Gale Halderman, John Najjar, Robert M. Thomas and George Walker.

Powered by a 430-cubic-inch V8 producing 300 horsepower, Lincoln Continental delivers driving pleasure commensurate with its breakthrough design.

Notable owners include Walt Disney, Neil Young and Pablo Picasso.

The iconic Lincoln Continental with its center-opening doors is available from model years 1961 through 1969.

1955

1960

1961

1968

April 5, 1968: Lincoln Continental Mark III is introduced.

Sept. 17, 1971: 1972 Lincoln Continental Mark IV debuts.

1971

Lincoln Continental offers Golden Anniversary Town Car.



1969 LINCOLN MARK III



1979 LINCOLN CONTINENTAL MARK V

1977-1979: Lincoln Continental Mark V enjoys a two model year run.

1977

1979

Oct. 12, 1979: 1980 Lincoln Continental Mark VI is introduced to the public.

The Italian design house of Versace creates special designer series for Mark VII. It runs from 1984 to 1985.

1983

1984

Nov. 10, 1983: 1984 Lincoln Mark VII is introduced. It is the first Mark to drop the word Continental from its title.

Continental celebrates its own 50th anniversary of Lincoln.

1990

1992

Dec. 26, 1992: Lincoln Mark VIII is introduced.

Continental celebrates 75th anniversary of Lincoln with a Diamond Anniversary Edition.

1996

Dec. 17, 2018: Lincoln Continental 80th Anniversary Coach Door Edition debuts.

2018



80TH ANNIVERSARY COACH DOOR EDITION



80TH ANNIVERSARY COACH DOOR EDITION